



Software Localization using SDL Passolo 2009

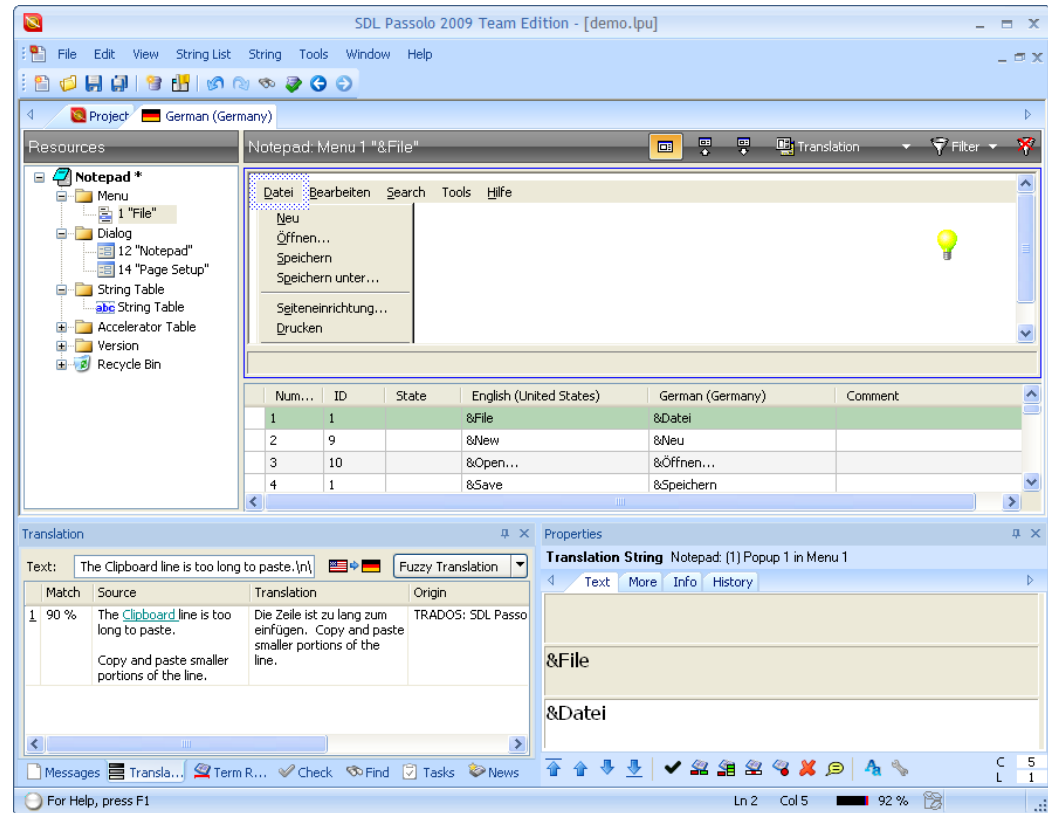
Achim Herrmann
Senior Business Consultant
SDL Passolo GmbH



Main features of SDL Passolo



- Specialized visual software localization tool
- Support of the main development platforms
- Visual WYSIWYG editors for dialogs, menus, bitmaps
- Test functions for all common localization problems
- Translation memory with fuzzy matching
- Can be integrated with SDL Trados, SDL Trados Studio, SDL MultiTerm and SDL TMS
- Full Unicode Support
- Alignment and Update features
- OLE Automation and Scripting



● Windows Software (C++ with Standard Resources)

- Binary files (EXE, DLL, SYS)
- RC files
- All platforms (16, 32 and 64 Bit)

● Windows .NET Software (C#, VB.NET, C++)

- Binary files (EXE, DLL), Satellite Assemblies
- RESX files
- All Frameworks are supported (1.0 to 3.5)
- Visual localization of WPF (Windows Presentation Foundation)
- Localization of Silverlight

● Windows VB6 Software (VBP, FRM)

● Borland Delphi/C++ Builder

- Binary files (EXE, DLL, BPM)
- Supported for Delphi 3 to Delphi 2009

● **Java Software (J2EE, J2SE and J2ME)**

- Properties files
- Source files (JAVA)
- Binary files (CLASS)
- Java project files (JAR, WAR)

● **Mobile Software**

- Windows based (Pocket PC, Windows Mobile)
- Others (Palm OS, Symbian, Blackberry)

● **Microsoft Installer Files (MSI)**

● **HTML files including SRX segmentation and visualization**

● **Unix/Linux PO files**

● XML File Parser

- Support for multilingual files
- Supporting XPATH
- Generic parser (Define own rules)
- Pre-defined rules (XLIFF, TMX, Qt and other formats)

● Text File Parser

- Generic parser (Define own rules using regular expressions)
- Pre-defined rules (INI, JavaScript and many other formats)

● Database Parser

- Excel, MS Access, SQL Server, Oracle, MySQL, IBM DB2

● User defined parser

- VBA compatible scripting engine

- **Simple handling of multilingual localization projects**
 - Source and all translations maintained in one single compressed repository
- **Update feature for easy translation of new software releases**
 - Compares project with new source files
 - Only changed and new strings must be translated
 - One click operation
- **Alignment and Leverage of translations and layout data**
- **Full history of edits including rollback to previous versions**
- **User and task management in projects**
- **Access rights for translators**
- **Support for chained/pivot projects**

- **WYSIWYG editors for visual localization**
- **Dialogs, menus, web pages, bitmaps can be displayed and changed**
- **Windows, Microsoft .NET, WPF, Delphi, HTML, MSI, VB**
- **Pseudo translation for internationalization testing**

- **Internal translation memory with fuzzy matching and concordance technology**
 - High speed access to large glossaries (QuickIndex Technology)
 - Possibility to access sub segment translations
- **Integrate with SDL Trados, SDL Trados Studio, SDL MultiTerm and the corresponding server components**
- **Efficient functions to translate text repetitions**
- **Automatic insertion of access keys**
- **Text length checking**
 - Character based
 - Based on pixels (for embedded system localization)
- **Search and Replace with Regular Expressions**

● Various checking functions for all common localization problems

- Overlapped controls
- Truncated text
- Missing placeholders/access keys
- Inconsistent placeholders
- Max text length
- Wrong codepage
- ...
- Inconsistent terminology
- Inconsistent translation

● Use Microsoft Word as spell checker (red wave line)

● User defined checks

● Command line interface

- Integration into build server environments

● **SDL Passolo is a COM object and exposes an object model (like Word or Excel)**

- Functions can be added and changed
- Integrated VBA compatible scripting language
- Integrated IDE with editor and debugger
- Integration into workflow systems (like SDL TMS)